

Social Indicator Comparisons

Indicator	Healthy People 2010	United States	New York	Nassau	Suffolk
Rental Housing	-	45.6%	47.5%	56.1%	54.1%
Home Ownership Cost Burden	-	30.5%	34.6%	43%	45.9%
Mortgage Delinquency 90+ Days, 2Q09	-	7.97%	3.37%	4.59%	6.12%
Personal Bankruptcy Filings Increase, 2006-09	-	↑32.4%	↑21%	↑42.6%	↑32.3%
Food Stamp Enrollment Increase, 2006-09	-	↑32%	↑32.9%	↑45%	↑60%
Child Abuse Reports Increase, 2007-08	-	-	↑6%	↑3.2%	↑8.6%
Early Prenatal Care Rate	90%	83.2%	73.8%	81.2%	71.9%
Low Birth Weight Rate	5%	8.3%	8.1%	8%	8%
Infant Mortality per 1,000 Live Births	4.5	6.7	5.5	4.3	4.6
Unintentional Falls Rate per 10,000 Population	-	-	77.7 (65-74) 233 (75 -84) 531.5 (85+)	89.6 (65-74) 287 (75 -84) 735.7 (85+)	82.4 (65-74) 269.7 (75 -84) 690.8 (85+)
Drug-Related Discharge Rate per 100,000 Population	-	-	229	172	213
Suicide Rate per 100,000 Population	5	11.1	7.1	5.3	7

* All data are for 2007 unless otherwise noted on the chart

Nassau County ZIP Codes With Highest Number of New Foreclosures 2Q09

Area	ZIP Code	2009 New Foreclosures*	% Black	% Hispanic or Latino	Median Household Income	Median Age	% Individuals Below Poverty Level
Nassau County		265	10.0	10.0	\$72,030	38.5	5.2
Hempstead	11550	25	51.0	31.0	\$46,291	29.6	17.0
Freeport	11520	24	32.0	34.0	\$55,923	34.6	10.8
Westbury	11590	20	23.9	22.0	\$71,147	35.5	7.7
Baldwin	11510	19	17.9	10.1	\$73,553	37.9	4.5
Elmont	11003	19	35.4	13.3	\$63,677	35.9	7.0
Valley Stream	11580	9	14.7	13.2	\$63,802	38.3	3.9
Levittown	11756	8	0.5	7.4	\$69,835	37.1	2.9
Massapequa	11758	8	4.5	4.0	\$76,718	38.5	2.9
East Meadow	11554	8	4.3	7.0	\$67,185	38.6	3.8
Roosevelt	11575	7	80.0	16.0	\$57,252	31.7	14.5

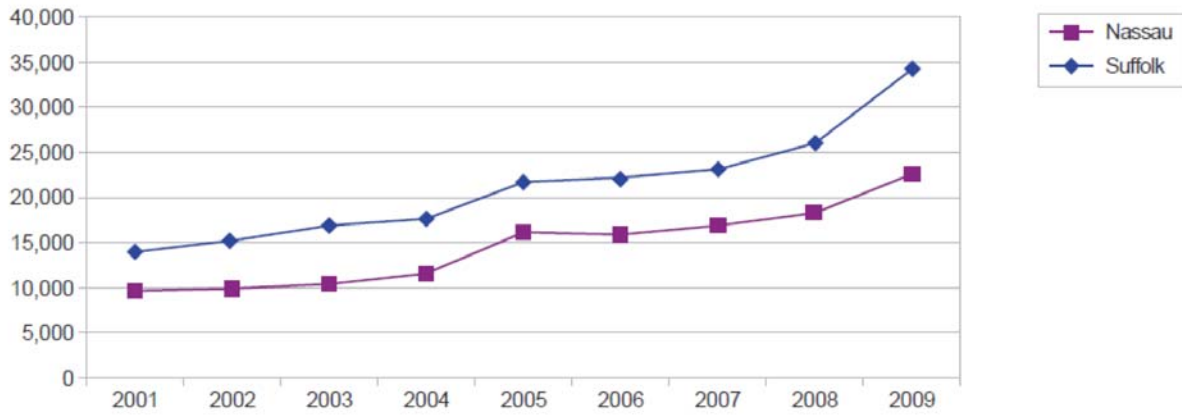
Sources: U.S. Census 2000; Property Shark; Nassau County Office of Housing and Intergovernmental Affairs
 *New foreclosure is defined as a property scheduled for auction for the first time during the period listed.

Suffolk County ZIP Codes With Highest Number of New Foreclosures 2Q09

Area	ZIP Code	2009 New Foreclosures*	% Black	% Hispanic or Latino	Median Household Income	Median Age	% Individuals Below Poverty Level
Suffolk County		492	7	11	65,288	36.5	6.0
Brentwood	11717	37	18	53	58,985	31.0	11.4
Bay Shore	11706	32	14	28	56,128	34.6	9.6
Central Islip	11722	30	27	35	57,493	31.8	11.0
Wyandanch	11798	22	70	15	51,823	29.7	12.4
Shirley	11967	19	3	10	57,441	32.1	7.4
Lindenhurst	11757	18	1	8	61,536	35.9	5.8
Medford	11763	13	8	11	67,207	34.5	4.1
Amityville	11701	13	40	11	52,078	36.6	8.9
North Babylon	11703	13	2	7	62,569	37.7	3.0
Coram	11727	12	11	10	55,398	35.2	6.0

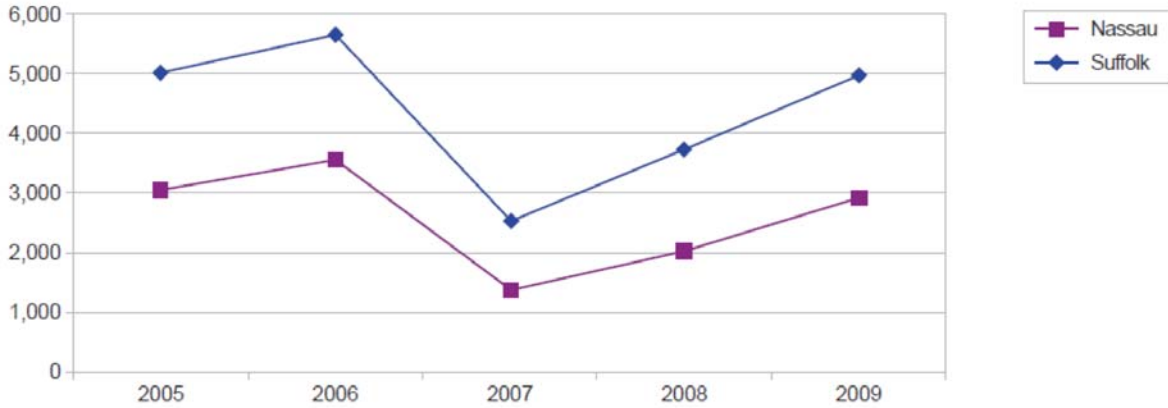
Sources: U.S. Census 2000; Property Shark; Suffolk County Community Development
 *New foreclosure is defined as a property scheduled for auction for the first time during the period listed.

Number of Households Receiving Food Stamps May 2001–May 2009



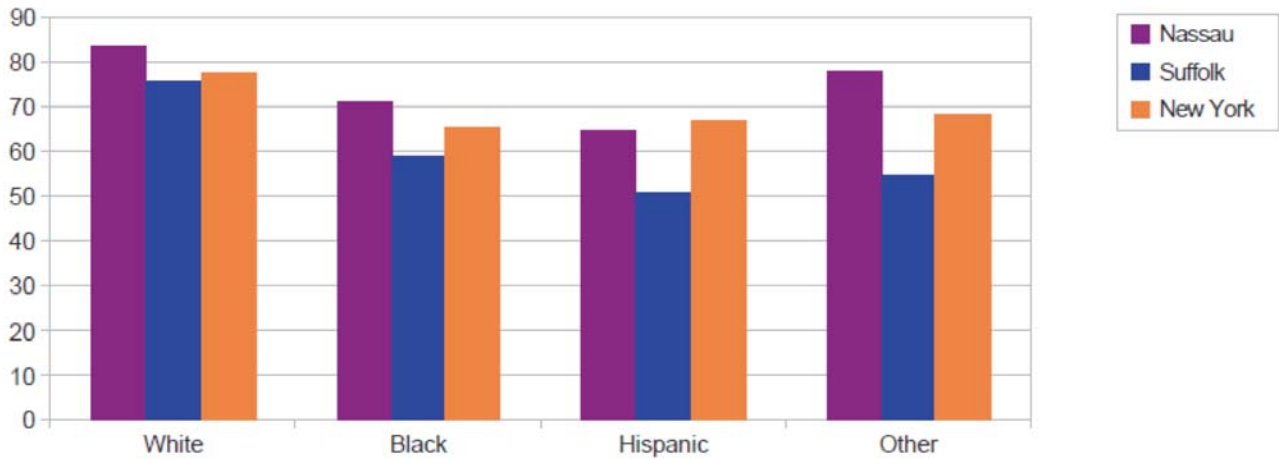
Source: New York State Office of Temporary and Disability Assistance

Number of Personal Bankruptcy Filings March 31, 2005 – March 31, 2009



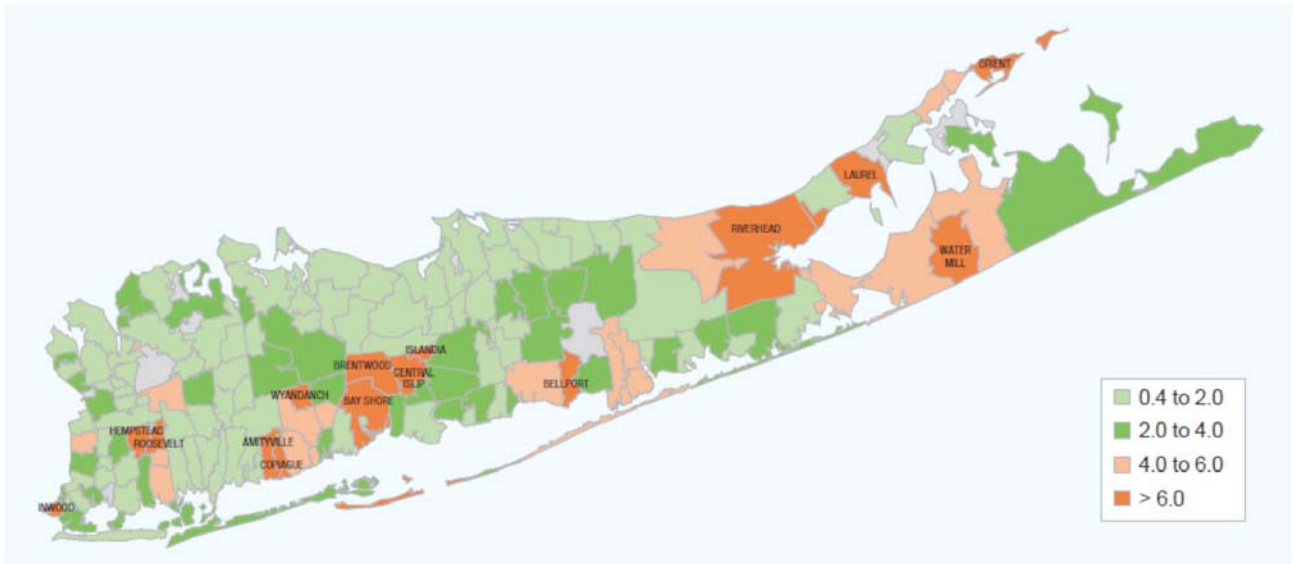
Source: Administrative Office of the U.S. Courts, PACER

Percent Early Prenatal Care by Race/Ethnicity 2007



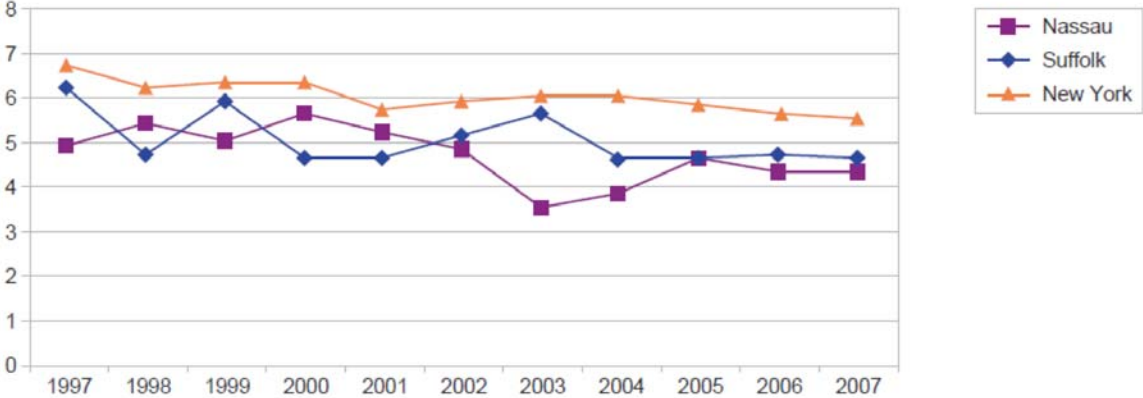
Source: New York State Department of Health

Late or No Prenatal Care Rate Average 2004–2006



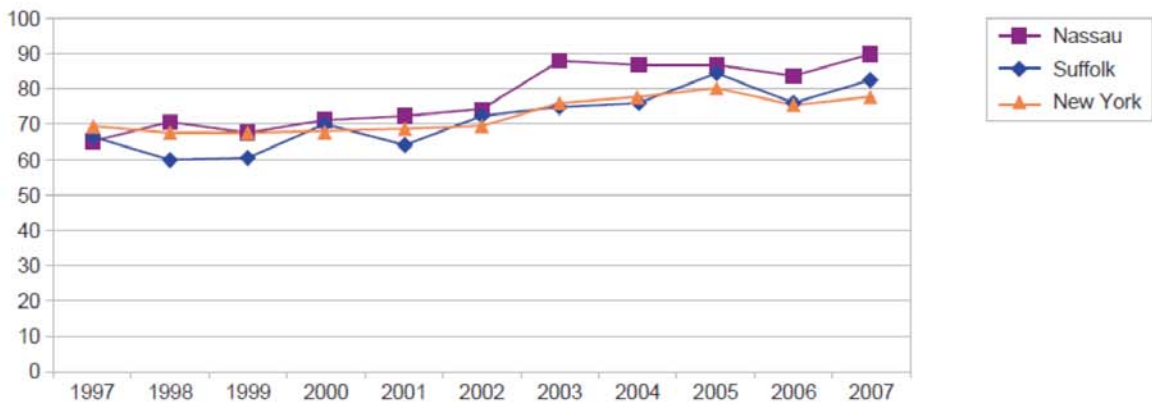
Map by North Shore–LIJ Health System Office of Strategic Planning and Program Development
 Data Source: New York State Department of Health
 *Grey colored ZIP Codes represent no or missing values

Infant Mortality Rate Per 1,000 Live Births 1997-2007



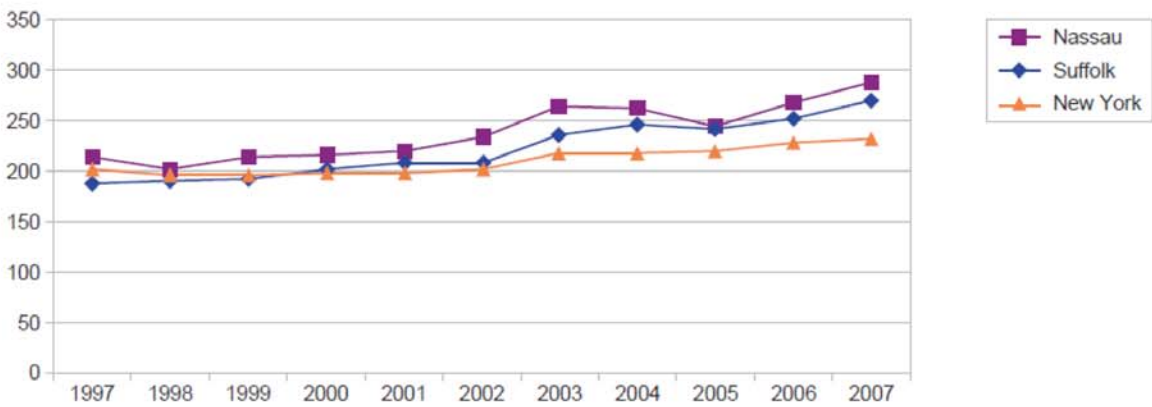
Source: New York State Department of Health

Unintentional Falls Rate (crude) per 10,000 Population Ages 65-74



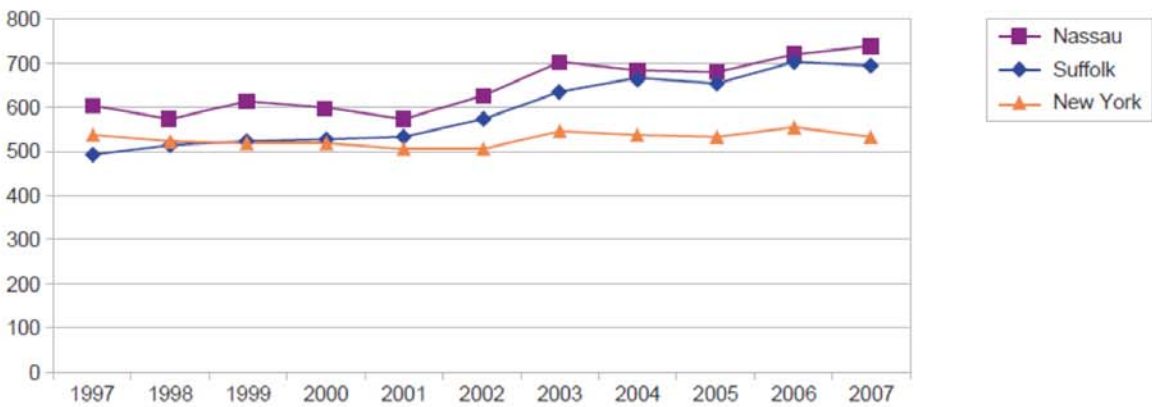
Source: New York State Department of Health

Unintentional Falls Rate (crude) per 10,000 Population Ages 75-84



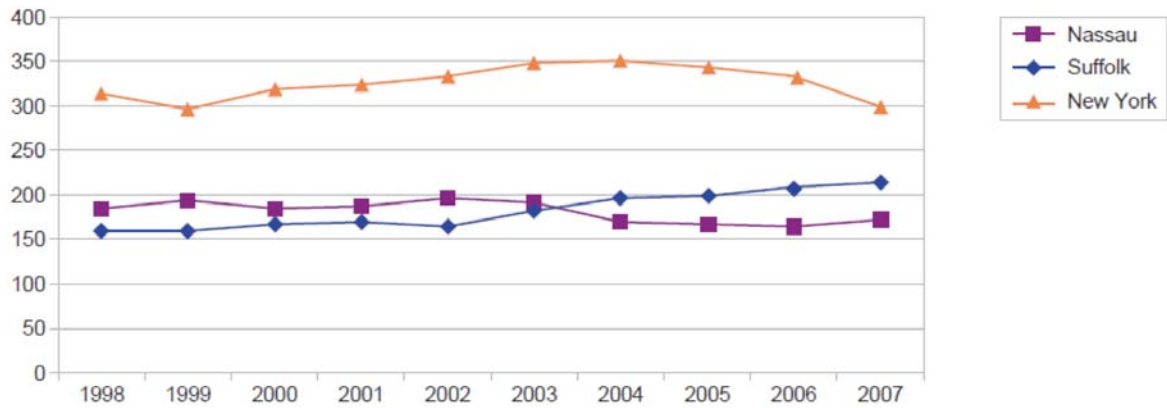
Source: New York State Department of Health

Unintentional Falls Rate (crude) per 10,000 Population Ages 85 and older



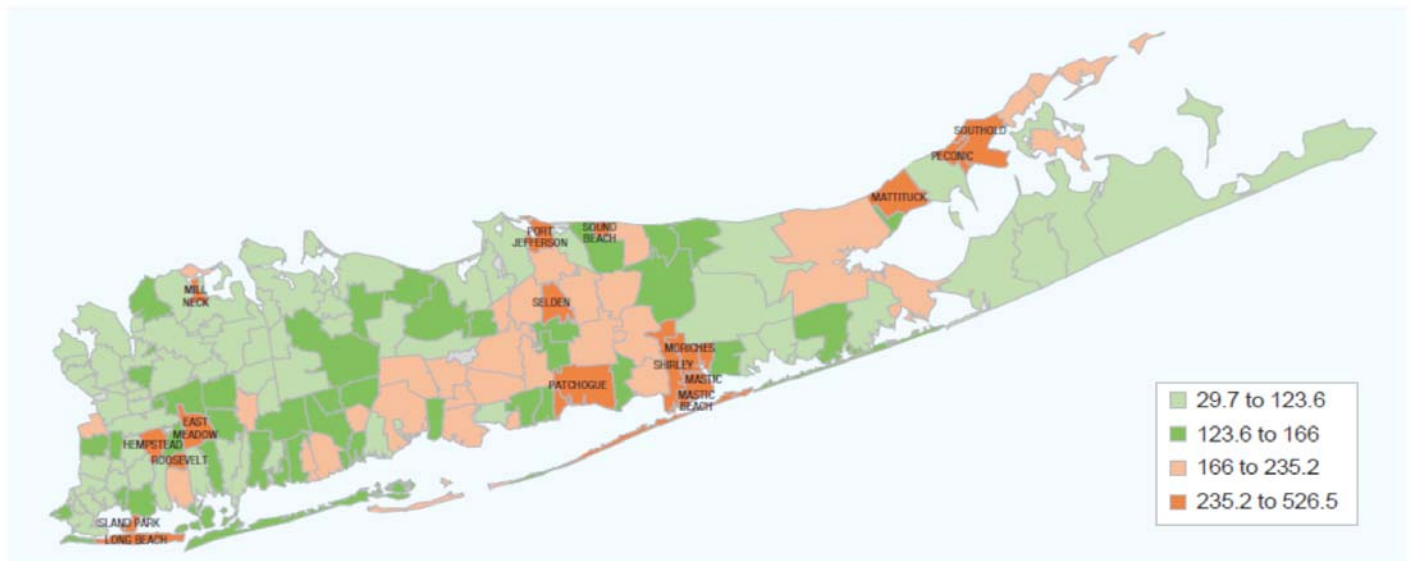
Source: New York State Department of Health

Single Year Drug-related Discharge Rate Per 100,000 Population 1998-2007



Source: New York State Department of Health

2002-2006 Average Drug Related Discharge Rate Per 100,000 Population

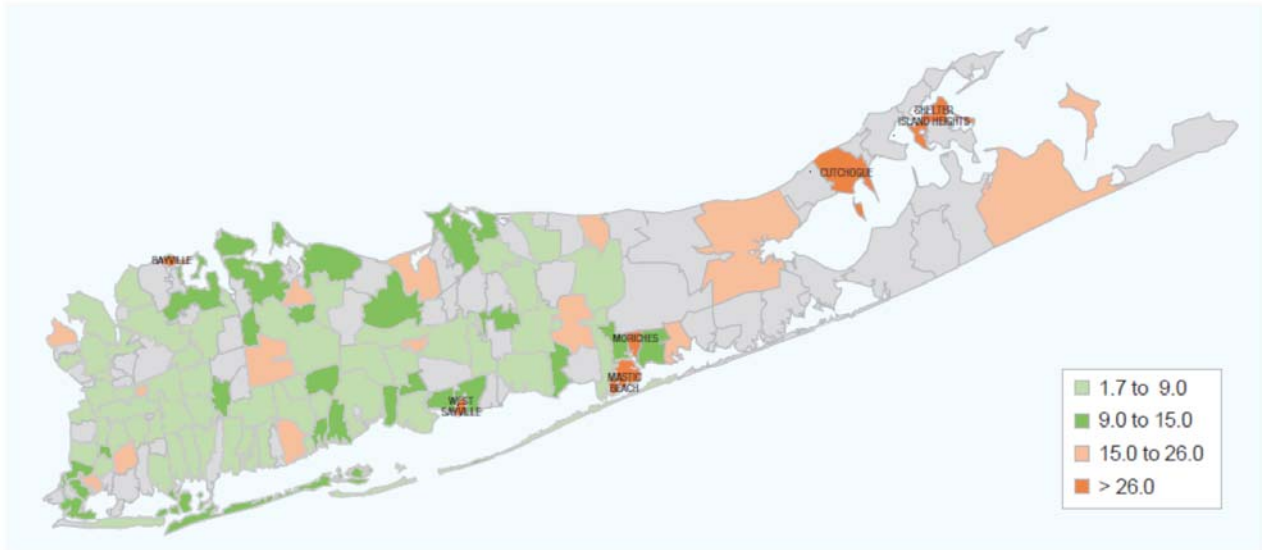


Map by North Shore-LIJ Health System Office of Strategic Planning and Program Development

Data Source: New York State Department of Health.

*Grey colored ZIP Codes represent no or missing values

Suicide Rate Per 100,000 Population 2002-2006 Average



Map by North Shore-LLJ Health System Office of Strategic Planning and Program Development
Data Source: New York State Department of Health.
*Gray colored ZIP Codes represent no or missing values